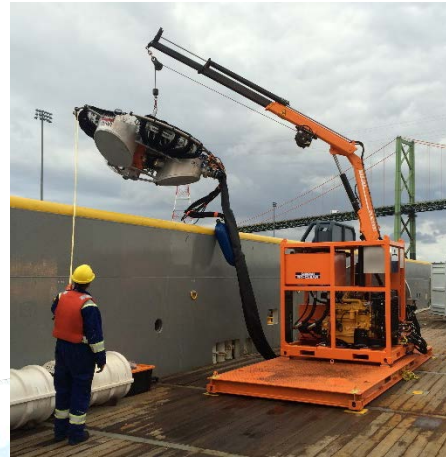
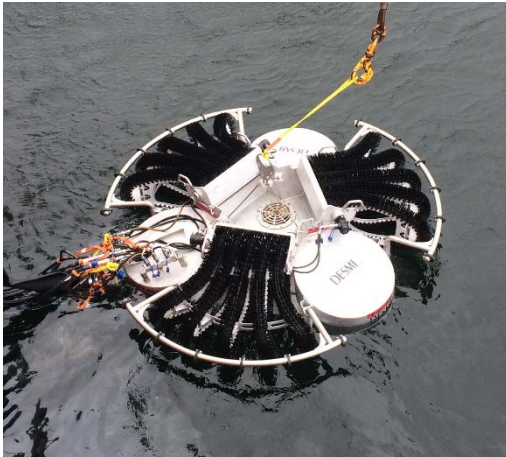




DESMI GIANT OCTOPUS



Inventory

	Great Lakes	Québec	Atlantic	Total
Desmi Giant Octopus	0	1	1	2

Application

Advanced high capacity skimming system suitable for the recovery of all types of oils. Suitable for sheltered and open water usage. The hose reel and integral jib crane within the DESMI power pack allows it to be deployed from a dock or the deck of the recovery barge or a vessel of opportunity and may be used in conjunction with a sweep system.

Description

The skimmer head is equipped with three, splayed brush rail banks which are designed in such a way that the skimmer has a full 360 degree encounter with the oil. These brush rails also extend out well beyond the central buoyancy chamber of the unit allowing free and uninterrupted access to the oil. Each brush rail has its own, independent hydraulic motor which ensures total control. There are two, integral but removable, DESMI DOP 250 Dual pumps each with a capacity of 125m³/h / 550 gpm.

Operating Data

	<u>Desmi Giant Octopus</u>
Nominal recovery rate:	6000 m ³ /d
De-rated recovery rate:	1200 m ³ /d

Ancillaries

- Crane - Guerra M65-20 A2
- Hydraulic power pack
- Remote control stand
- Hydraulic & Discharge Hose Reel

Technical Data

	<u>Skimmer head</u>	<u>Power Pack/Crane/Reel</u>
	Draft: 1 m	Air cooled diesel engine, 119kW (160HP)
Weight:	680 kg / 1500 lbs.	Std. 20ft Flat Rack, 8100kg
Length:	2.8 m	6.06 m
Width:	2.8 m	2.44 m
Height:	2.3 m	2.45m

ECRC~SIMEC
 Suite 1201, 275 Slater Street, Ottawa K1P 5H9
 Phone (613) 230-7369 Fax (613) 230-7344
 Web: www.ecrc-simec.ca