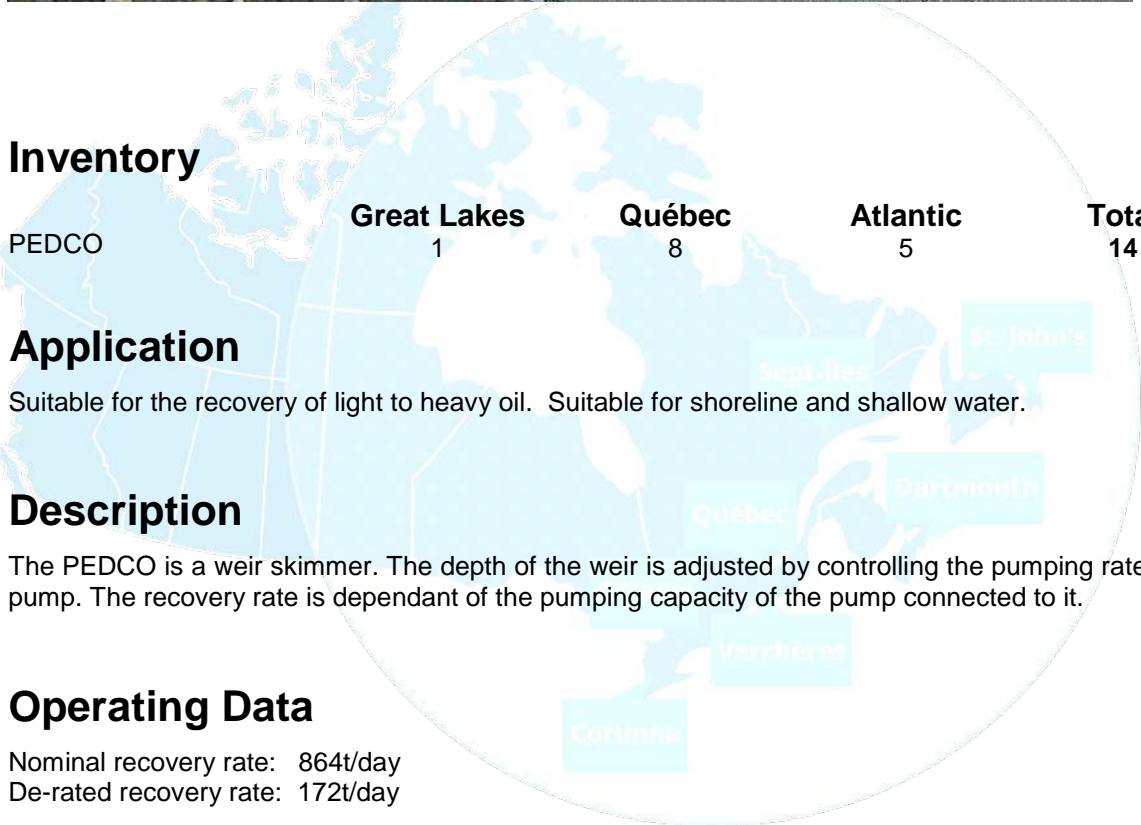
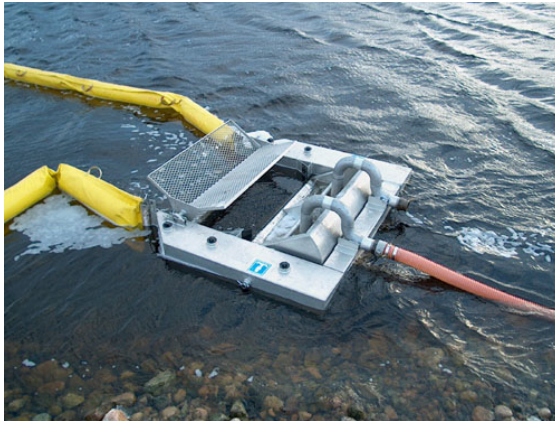




PEDCO SKIMMER



Description

The PEDCO is a weir skimmer. The depth of the weir is adjusted by controlling the pumping rate of the pump. The recovery rate is dependant of the pumping capacity of the pump connected to it.

Operating Data

Nominal recovery rate: 864t/day
De-rated recovery rate: 172t/day

Technical Data

Length: 1.7 m (5 ft. 6 in)
Width: 2.0 m (6 ft. 5 in)
Height: 0.8 m (2 ft. 7 in)
Weight: 55 kg (122 lbs)